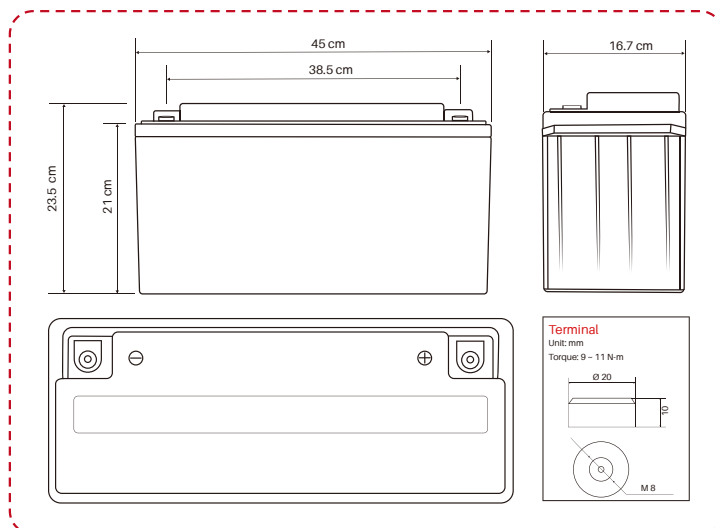


## PB SERIES — SMART BLUETOOTH BMS



### Items

Nominal Capacity	150Ah
Nominal Energy	1920Wh
Nominal Voltage	12.8V
Cell	Cylindrical Cell
Monitoring	Bluetooth 4.0 With Smartphone App
BMS Battery Management System	Integrated
Cycle Life	≥3000 at 80% DoD
Charging Characteristics	CCCV/IU
Normal Charge Voltage	14.6V
Operating Voltage range	10-14.6V
Max Charge Current	50A
Shipping Classification	UN 3480 / CLASS 9

### Items

Recommended Charge Current	20A
Discharge Current	150A
Peak Discharge Cut-Off Current (5 ~15 ms)	450A
Terminal Type	M8
Water Proof	IP65
Dimension (L x W x H) in MM	483×170×240
Weight (No Accessories)	19kg
Charge Temperature	0~45°C
Discharge Temperature	-20~60°C
Storage Temperature	-5~35°C
Series & Parallel	4 series and 4 parallel at most
Certifications	CE / UL / UN38.3 / MSDS / ROHS